

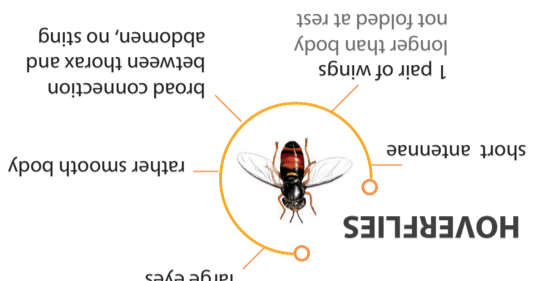
BEETLES
COLEOPTERA

HYMENOPTERA



WASPS

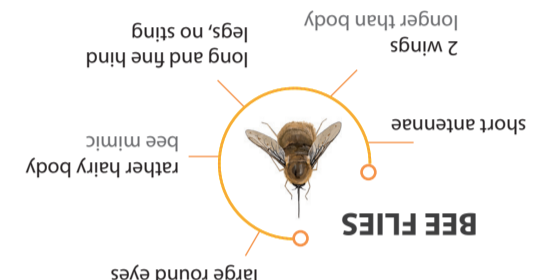
DIPTERA (FLIES)



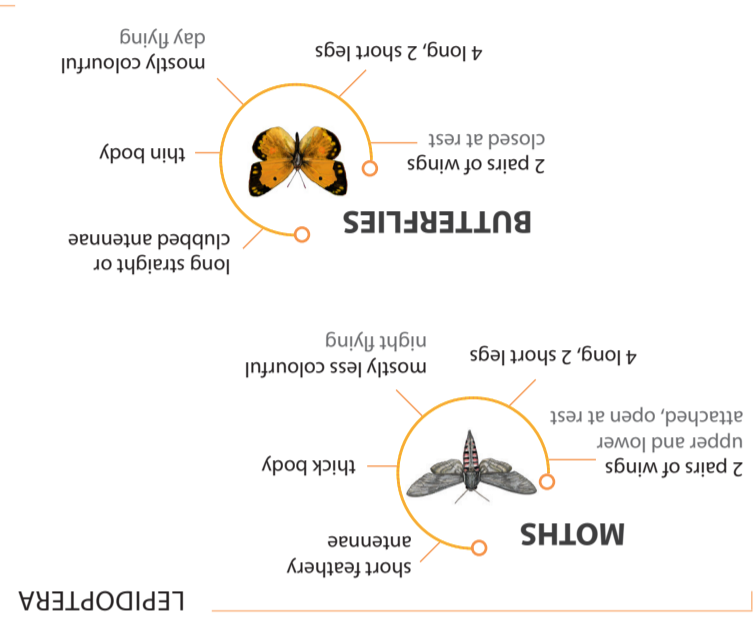
HOVERFLIES



BEES



BEE FLIES



BUTTERFLIES

MOTHS

LEPIDOPTERA

POLLINATING INSECTS

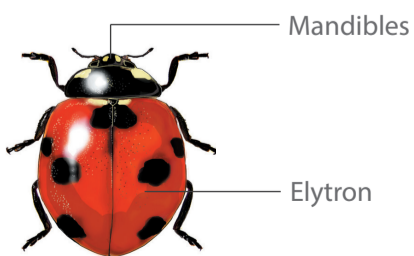
BEETLES

Beetle pollinators can be found on flowers mostly from spring to summer. Their larvae develop as consumers of organic material, and are free-living predators or kleptoparasites, mostly of other insects.

IDENTIFY BEETLES IN THE FIELD

- flower visiting beetles are found on a variety of open flowers
- the forewings are modified into elytra (sing. elytron), i.e. very hard pair of wings that cover and protect the abdomen and the hind pair of membranous wings
- the mouthparts are of the biting or chewing type, with strong mandibles
- most pollinating beetles are dark-coloured, but some of them have bright red or green colours
- in general, beetles are among the most sedentary of all flower-visiting insects (except buprestid beetles), spending much time on the flowers and less moving on and between flowers and plants

BEETLE ANATOMY SIMPLIFIED



LIFE 4 POLLINATORS

The aim of the project is to improve pollinator conservation by creating a virtuous circle leading to a progressive change in practices across the Mediterranean region.

In Mediterranean countries (Spain, Italy, France and Greece) there is inadequate awareness about the role of wild pollinators and the importance of conserving their diversity. This knowledge gap is one of the main obstacles to proper planning of successful programmes to address the main drivers behind pollinator decline and ensure sustainable management and restoration of the remaining high-value pollinator habitats.



The project will contribute to a range of EU policy and legislation matters, including amongst others the biodiversity strategy, the pollinators initiative and biodiversity protection under the common agricultural policy.

LIFE 4 POLLINATORS

BEETLES AS POLLINATORS IN THE MEDITERRANEAN

FIELD GUIDE

The LIFE 4 POLLINATORS project (LIFE 18 GIE/IT/000755) has received funding from the LIFE Programme of the European Union

BEEYLES

Acmaeoderella villosula

BODY no open space between the thorax and the elytra, both with the same width

BODY metallic blue elytra

beetle of the family Buprestidae

found mostly on flowers of Apiaceae

May-June

DIMENSIONS: 7-10 mm

Anthaxia hungarica

BODY no open space between the thorax and the elytra, both with the same width

BODY metallic green elytra female with characteristic red markings on the thorax

beetle of the family Buprestidae

found mostly on flowers of Asteraceae

May-June

DIMENSIONS: 12-14 mm

Anthrenus pimpinellae

found mostly on flowers of Apiaceae, Asteraceae and Rosaceae

BODY characteristic patterns of tomentose hairs on the entire body

small beetle of the family Dermestidae

April-July

DIMENSIONS: 3-4 mm

Stictoleptura cordigera

BODY red elytra with characteristic black pattern

BODY long and serrate antennae

long beetle of the family Cerambycidae

found on a wide variety of flowers

May-July

DIMENSIONS: 13-15 mm

Cetonia aurata

antennae with club-shaped tip and lamellate

BODY green metallic elytra with white spots

large beetle of the family Scarabaeidae

found mostly on flowers of Asteraceae and Rosaceae

April-July

DIMENSIONS: 15-20 mm

Coccinella septempunctata

rarely found on flowers, usually on Asteraceae or Apiaceae

BODY red elytra with 3 spots on each side and one frontal spot in the center

small lady beetle of the family Coccinellidae

March-Oct.

DIMENSIONS: 5-8 mm

Mylabris quadripunctata

found mostly on flowers of Asteraceae

BODY orange elytra with black spots

orange and black beetle of the family Meloidae

May-July

DIMENSIONS: 12-16 mm

Mylabris variabilis

found mostly on flowers of Asteraceae

BODY orange elytra with black bands

orange and black beetle of the family Meloidae

May-July

DIMENSIONS: 10-16 mm

Oedemera flavipes

BODY the entire body dull metallic green

BODY long filiform antennae

small slender beetle of the family Oedemeridae

found mostly on flowers of Cistaceae and Asteraceae

April-May

DIMENSIONS: 6-8 mm

Oxythyrea funesta

antennae with club-shaped tip and lamellate

BODY the upper thorax has 2 longitudinal rows of 3 spots each pattern of white spots on elytra

large beetle of the family Scarabaeidae

found mostly on flowers of Asteraceae and Apiaceae

April-July

DIMENSIONS: 10-12 mm

Podonta sp.

BODY relatively long legs and tarsi

BODY oval body and threadlike antennae

black beetle of the family Alleculidae or Tenebrionidae

found mostly on flowers of Asteraceae

May-June

DIMENSIONS: 7-9 mm

Psilothrix viridicoerulea

found mostly on flowers of Asteraceae

BODY the entire body dull metallic green

small green beetle of the family Melyridae

March-May

DIMENSIONS: 5-6 mm

Pygopleurus foina

BODY bright metallic green, blue or orange thorax, very variable

BODY hairy and large beetles with club-shaped tip and lamellate

large beetle of the family Glaphyridae

found mostly on flowers of Asteraceae, Papaveraceae and Ranunculaceae

April-May

DIMENSIONS: ♀ 10-14 mm ♂ 10-12 mm

Pygopleurus vulpes

BODY the entire body covered with bright orange hairs ♀ very similar to *P. foina*, but generally with more lighter hairs

BODY hairy and large beetles with club-shaped tip and lamellate

large beetle of the family Glaphyridae

found mostly on flowers of Papaveraceae

April-May

DIMENSIONS: ♀ 10-12 mm ♂ 11-13 mm

Rhagonycha fulva

black antennae and tarsi

BODY largely orange or red, also the upper part of the legs

elytra with characteristic black tip

found mostly on flowers of Apiaceae and Asteraceae

soldier beetle or beetle of the family Cantharidae

May-July

DIMENSIONS: 8-10 mm

Stenopterus rufus

BODY thighs thickened towards the end

BODY long and serrate antennae

antennae and legs contrasting red and black

elytra very slender towards the tip

slender beetle of the family Cerambycidae

found mostly on flowers of Apiaceae

May-July

DIMENSIONS: 13-15 mm

Trichius sp.

antennae with club-shaped tip and lamellate

BODY characteristic yellow and black elytra

hairy and large beetle of the family Scarabaeidae

found mostly on flowers of Apiaceae and Asteraceae

May-July

DIMENSIONS: 12-15 mm

Trichodes sp.

found mostly on flowers of Asteraceae and many others

BODY antennae with a club-shaped tip

bright metallic blue or green and red beetle of the family Cleridae

March-May

DIMENSIONS: 10-18 mm

Tropinota hirta

antennae with club-shaped tip and lamellate

BODY all covered in yellow or brown hairs

often with white spots on the elytra

very hairy and large beetle of the family Scarabaeidae

found mostly on flowers of Asteraceae, Rosaceae and Apiaceae

May-June

DIMENSIONS: 10-13 mm

Variimorda sp.

BODY elytra dark with pale patches

BODY the end of the abdomen tapering into a sharp and elongated tip

small dark beetle of the family Mordellidae

found mostly on flowers of Apiaceae

May-July

DIMENSIONS: 6-8 mm